

CATHODE RAY TUBE

ECR60

High-sensitivity oscilloscope tube
with 6-in. diameter screen.

HEATER

V_h	4.0	V
I_h	1.0	A

CAPACITANCES

Grid to all other electrodes	< 25	uuF
Each X plate or each Y plate to all other electrodes	< 25	uuF
One X plate to one Y plate	< 5	uuF

FLUORESCENT COLOUR

Green. Non-persistent.

DEFLECTION

Electrostatic. The tube is suitable for either symmetrical or asymmetrical operation

With asymmetrical deflection the trapezoidal distortion is such that the angle between adjacent sides of an 80 mm x 80 mm scan is between 85° and 95°

OPERATING CONDITIONS

$V_{a1}=V_{a3}$	2,000	V
V_{a2}	250 to 450	V
V_g	-1.0 to -100	V

LIMITING VALUES

$V_{a1}=V_{a3}$ max	2,500	V
V_{h-k}	50	V

DEFLECTION SENSITIVITY

X plates	$\frac{600}{V_{a3}}$	mm/V
Y plates	$\frac{1150}{V_{a3}}$	mm/V



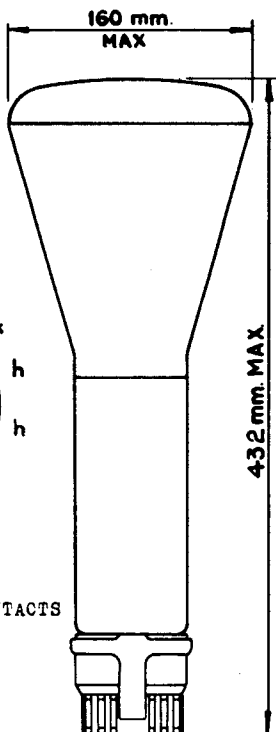
ECR60

CATHODE RAY TUBE

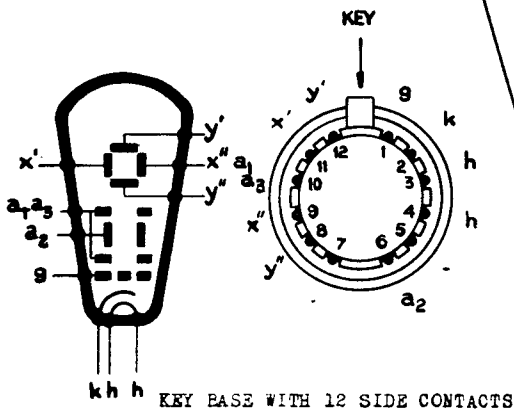
High-sensitivity oscilloscope tube
with 6-in. diameter screen.

Viewed from the screen end, and with the tube positioned so that the key of the base is uppermost, a positive voltage on X' will deflect the spot to the left, and a positive voltage on Y' will deflect the spot upwards.

DIMENSIONS



ARRANGEMENT OF ELECTRODES AND BASE CONNECTIONS



Contacts 5, 7 and 10
should be connected
together externally

